

# **Export Action Plan for Beed District**

**Chh.Sambhajinagar Region,  
Maharashtra**

**July 2024**





# Contents

1	District Profile.....	2
1.1	Introduction .....	2
1.2	Administrative Profile .....	2
1.3	Location and Geography.....	2
1.4	Demographic Profile .....	2
1.5	Logistic Infrastructure Profile.....	2
1.5.1	Road Transport.....	2
1.5.2	Rail Transport.....	3
1.5.3	Air Transport.....	3
1.6	Agricultural Profile.....	3
1.6.1	Major Agriculture and Horticulture Produce of District.....	4
1.7	Industrial Profile .....	4
1.8	Service Sector Profile .....	5
1.9	Industrial Infrastructure Profile .....	5
1.10	Industrial Associations of the District.....	5
1.11	Banking Facilities.....	6
1.12	Beed District Strengths and Opportunities .....	7
2	District Export Profile .....	7
2.1	Beed District Export Scenario .....	7
2.2	Existing and Proposed Infrastructure Status .....	8
2.3	District ODOP and GI Product Profile.....	8
2.3.1	Current Market for district's ODOP and GI Products .....	8
2.4	Top Exporting Products and Countries from District.....	9
2.4.1	Top 10 Exporting Products from District .....	9
2.4.2	Top 10 Exporting Countries from District .....	11
2.5	Potential Export Product Profile .....	13
2.6	Major Clusters in District .....	13
2.7	Major Industrial Units in the District.....	13
2.8	Key Issues in Export .....	19
2.9	Export Promotion Initiatives by District.....	23
2.9.1	Formation of DEPC (District Export Promotion Council) .....	23
3	District Export Promotion Strategy .....	<b>Error! Bookmark not defined.</b>
3.1	Diversification Opportunities for ODOP and GI products.....	25
3.2	Export Promotion Strategy .....	25
3.3	Key Department Contacts.....	35



## 1 District Profile

### 1.1 Introduction

The Beed district is in the Marathwada region of Maharashtra state. This district is almost in the center of the state of Maharashtra. The district is known as a drought prone area. The administrative center of the district is Beed. The district is known for its co-operative movements. Beed is also known as the district of sugarcane workers in Maharashtra, many sugar mills in the state of Maharashtra usually have beed workers for cane cutting. The Parli Vajinath, one of the twelve Jyotirlingas is in Beed district and one of the first Marathi poet Mukundaraj was born in Beed district.

### 1.2 Administrative Profile

The administrative headquarters of Beed district is Beed city. The district is divided into five subdivisions namely Beed, Majalgaon, Parli, Patoda, Ambajogai and eleven taluks namely Beed, Gevrai, Majalgaon, Dharur, Wadwani, Parli, Patoda, Asthi, Shirur (Kasar), Ambajogai, and kajj.

### 1.3 Location and Geography

The district occupies an area of 10,693 sq. km. and has a population of 2,585,049 of which 17.91% were urban (as of 2011). The district lies between north latitude 18°28' and 19°28' and east longitude between 74°48' and 76°45'. The district shares boundaries with Chh.Sambhajinagar and Jalna districts in the north, Parbhani in the east, Latur in the southeast, Osmanabad in in south and Ahmednagar district in the west and southwest.

### 1.4 Demographic Profile

According to the 2011 census Beed district has a population of 2,585,049 lakhs. This gives it a ranking of 160<sup>th</sup> in India (out of a total of 640). The district has a population density of 242 inhabitants per sq. km. The population growth rate over the decade 2001-2011 was 19.65%. The district has a sex ratio of 912 females for every 1000 males. Scheduled Castes and Scheduled Tribes make up 13.59% and 1.27% of the population respectively.

### 1.5 Logistic Infrastructure Profile

- ▶ The JNPT (365 km., 07.30 hrs.) and Dighi (415 km., 09.30hrs.) are the nearest seaport and dry port available for district.
- ▶ Jalna dry port (which is in catchment area of JNPT) work is in progress and will improve cargo movement to the port. The main objective of this project is to deliver agricultural and industrial products from Marathwada directly to Nhava Sheva Port in Mumbai. The Mumbai-Nagpur Samruddhi Highway work is in progress. Through this, the products will be delivered directly to Mumbai.

#### 1.5.1 Road Transport

The Beed district is connected by road to various major cities in Maharashtra and other states,

The major National Highways passing through the district are as mentioned below,

- ▶ NH-222 – Kalyan-Vishakhapatnam  
The district is connected to cities in Gujarat, Karnataka, Andhra Pradesh and Madhya Pradesh by this highway.
- ▶ NH-111 – Solapur-Dhule

## Beed District Export Action Plan

The district is connected to the cities Chh.Sambhajinagar, Dhule, Osmanabad and Solapur.

The major State Highways passing through the district are as mentioned below,

- ▶ SH-2 - Kalyan-Beed
- ▶ SH-44 - Shahpur-Beed
- ▶ SH-162 - Ambajogai-Akkalkot
- ▶ SH-169 - Renapur-Parli
- ▶ SH-168 – Renapur-Degloor

### 1.5.2 Rail Transport

The Parli Vajinath railway station is in the beed district. It is well connected to Hyderabad, Nizamabad, Usmanabad, Manmad, Kakinada, Vijayawada, Rajahmundry, Khammam, Warangal, Chh.Sambhajinagar, Latur, Parbhani, Purna, Nanded, Vikarabad, Zaheerabad, Bidar, Latur road, Raichur, Guntakal, Mumbai, Nashik, Bengaluru, Miraj, and Visakhapatnam. The Ahmednagar-Ashti railway line testing was already conducted by railway department and work is in progress for Ashti-Beed railway line.

### 1.5.3 Air Transport

The nearest airport available for Beed district is Chh.Sambhajinagar International Airport which is located at Chikalthana. The flights are available to Hyderabad, Delhi, Udaipur, Mumbai, Chennai, Bangalore, Ahmadabad, Jaipur and Nagpur. The international airlines have been available for Hajj since 2008. The Airport facilities include aircraft fueling, night landing with navigational aids, aircraft parking, CAT VII airport firefighting and rescue service. A well-equipped terminal building has VIP lounges, departure and arrival lounges, transit suites and snooze cabins, visitors' waiting area, and a cafeteria.

## 1.6 Agricultural Profile

Agriculture is the main business in Beed district, and it is largely dependent on monsoon rain. The district has 6,62,000 hectares area under crop, 2,36,000 hectares area under irrigation and 26,000 hectares area under forest. Beed also is a district which provides a large number of laborers in India specially in the form of sugarcane cutters.

The Jawar is an important high yielding crop in the district and is grown in both kharif and rabi seasons. The cotton is an important kharif cash crop. The other major crops grown in the district is Millet, Wheat, Tur, Green gram, Urad, Sesame, Lentil, Chilli, Onion, Soybean and Sugarcane. The Beed district is a leader in the production of oilseeds and vegetables.

The Horticulture is also widespread in the district. The crop of Sugarcane is cultivated in Ashti, Beed, Majalgaon, Gevrai, Ambejogai talukas. The Grapes are produced in Beed and Ambejogai talukas. The Watermelon is grown along the rivers Godavari and Manjra. The Ashti, Beed, Ambejogai and Neknur are leading in mango production. The Kala Pahad at Neknur and Pevandi at Ambajogai are famous mangoes. Apart from this, Peru, citrus and banana are also grown.

Considering population of livestock of the district, the milk production in the district is considered to be a side business of a large number of farmers. Milk is collected through eight government and four private milk teams.

The rivers and tributaries in the district are as mentioned below,

- ▶ Godavari is the major river in the district and flows through the northern boundary of the district. It flows through Gevrai, Majalgaon and Parli talukas of the district. Siddhamphana, Van and Saraswati are the tributaries of Godavari in the district.

- ▶ Manjra is the second most important river in the Beed district. This river originates in the mountain range of Harishchandra Balaghat in Patoda taluka. Cage, Rena, Limba and Chausala are tributaries of Manjra River in the district.

### 1.6.1 Major Agriculture and Horticulture Produce of District

Table 1.6.1 - Major Agriculture and Horticulture Produce of District

Sr. No.	Name of Product	Production in MT (2023-24)	Area under Cultivation Hectare (2023-24)
1.	Cotton	93,426.73	2,69,596
2.	Soyabean	4,85,197	3,66,678
3.	Jawar	2,75,087	1,95,087
4.	Cereals	4,10,960	2,86,837
5.	Oil Seeds	4,87,474	3,69,396
6.	Beed Custard Apple	14.737	1,637
7.	Limes and Lemons	14,499	2,900
8.	Pomegranate	39,657	2,644

Source: Ministry of Agriculture, GOI and Department of Agriculture, GOM

### 1.7 Industrial Profile

Although agriculture is the major occupation of majority of the population in Beed district, the people of the district are engaged in a variety of business. There are several sugar factories, spinning mills and a thermal Power Station in the district. There are around 36 ginning factories in the district, as cotton is one of the major crops cultivated in Beed district.

#### ▶ Industries and Employment Generation in Beed District

##### Industries and Employment Generation in District up to 31 March 2024

The below mentioned table illustrates industries and employment generation of the district,

Table – Total Industries, Investment and Employment Generation

Sr. No.	Category	No. of Enterprises	Investment (INR crore)	Employment
1	Mega Unit	-	-	-
2	Large Unit	20	625.23	5885
	Total	20	625.23	5885

Table –Total Industries, Investment and Employment Generation

Sr. No.	Category	No. of Enterprises			Investment in (INR Crore)			Employment Generation		
		Mfg	Service	Total	Mfg	Service	Total	Mfg	Service	Total
1	Micro	7073	12096	19169	603.39	531.06	1134.45	35995	34934	70929
2	Small	942	2092	3034	937.54	556.53	1494.07	14810	12860	27670

## Beed District Export Action Plan

Sr. No.	Category	No. of Enterprises			Investment in (INR Crore)			Employment Generation		
		Mfg	Service	Total	Mfg	Service	Total	Mfg	Service	Total
3	Medium	49	23	72	398.69	93.12	491.81	2327	756	3083
	<b>Total</b>	<b>8064</b>	<b>14211</b>	<b>22275</b>	<b>1939.62</b>	<b>1180.71</b>	<b>3120.33</b>	<b>53132</b>	<b>48550</b>	<b>101682</b>

Source: DIC Beed

### ► Sugar factories in the district,

- Parli Vajjnath Sahakari Sugar Factory, Parli
  - Kada Cooperative Sugar Factory, Ashti
  - Jai Bhavani Cooperative Sugar Factory, Gevrai
  - Majalgaon Cooperative Sugar Factory, Majalgaon
  - Gajanan Cooperative Sugar Factory, Beed
  - Vikhe Patil Cooperative Sugar Factory, Cage
  - Amba Cooperative Sugar Factory, Ambejogai
- MSAMB's (Maharashtra State Agricultural Marketing Board) Kesar Mango export facility center, APMC, Bahirwadi, Beed having cold storage unit (of 50 MT capacity), precooling unit (of 5 MT/ Batch capacity), Pack House (3875 Sq. ft.), DG Set (160 KVA), Transformer (160 KVA).

## 1.8 Service Sector Profile

The major services which are provided in the district are as follows,

- Educational Services
- Architectural Services and related services
- Consultancy Services
- Transport and Logistic Services
- Accounting and Finance Services
- Printing and Publishing Services

## 1.9 Industrial Infrastructure Profile

The district has many big and small industries like sugar, handlooms, ginning and other industries. A thermal power plant at Parli was established in 1970. Parli also has a factory for electric lamps and other electric components. Beed and Wadavni have handloom factories. There are oil mills in Ambejogai and Beed. Amalner in Patoda taluka is famous for its brass and copper vessels. Though gradual industrial progress is being made, agriculture remains the main occupation of the people of the district.

## 1.10 Industrial Associations of the District

**Table 1.10.1 - List of Industrial Association**

Sr. No.	Name of Association	Industry Sector
1.	Beed District Industries Association, Beed	Manufacturing
2.	Beed District Ginning & Pressing Union Association, Beed	Textile
3.	Beed District Tarun Udyog Sanghtana, Beed	Manufacturing and Service
4.	Laghu Udyog Bharati, Beed	Manufacturing and Service

### **1.11 Banking Facilities**

Beed district has major public sector and private bank branches including State Bank of India, Bank of Maharashtra, ICICI Bank, HDFC Bank, Axis Bank, Beed District Central Co-operative bank, Maharashtra Gramin Bank, Syndicate Bank, Central Bank of India, Union Bank of India.

## 1.12 Beed District Strengths and Opportunities

- ▶ The district has emerged as major cotton and custard apple production hub
- ▶ The cotton produced in the district has a high staple length and RD value which is largely used in Textile industries. From this perspective, the district has huge potential to be developed as a production hub for the textile industry.
- ▶ Beed custard apple has Geographical Indication (GI) tag owing to the sweetness from the 24.49 Brix TSS (more than the apples found in UK and US). Beed custard apple pulp is used in desserts like Basundi, rabri, jams, and jelly. This disease-resistant variety has good domestic and international demand. Considering the fact, that the district has huge potential for exporting Beed custard apple.
- ▶ The district has 36 operational ginning factories, 7 operational sugar factories, and Oil mills. By utilizing optimum infrastructure and production capacities of these industries, the allied industries segments can be developed to generate new employment opportunities and boost the economy of the district.
- ▶ Soyabean and Oilseeds are leading Agri produce of the district and allied business industries can be developed in the district.

## 2 District Export Profile

### 2.1 Beed District Export Scenario

The below mentioned table depicts Beed district's export scenario as well as state's export contribution in India's total export and Beed district's export contribution in state's total export.

**Table 2.1.1 - District Export Scenario in FY 2021-2022**

State and District Export Contribution - April 2021 to March 2022		
	Total Exports (INR crore)	Percentage Contribution
Maharashtra	5,45,083.85	17.33
Beed District	612.56	0.11

Source: Directorate General of Commercial Intelligence and Statistics (DGCI&S)

**Table 2.1.2 - District Export Scenario in FY 2022-2023**

State and District Export Contribution - April 2022 to March 2023		
	Total Exports (INR crore)	Percentage Contribution
Maharashtra	5,81,439.42	16.05
Beed District	663.10	0.11

Source: Directorate General of Commercial Intelligence and Statistics (DGCI&S)

**Table 2.1.3 - District Export Scenario in FY 2023-2024**

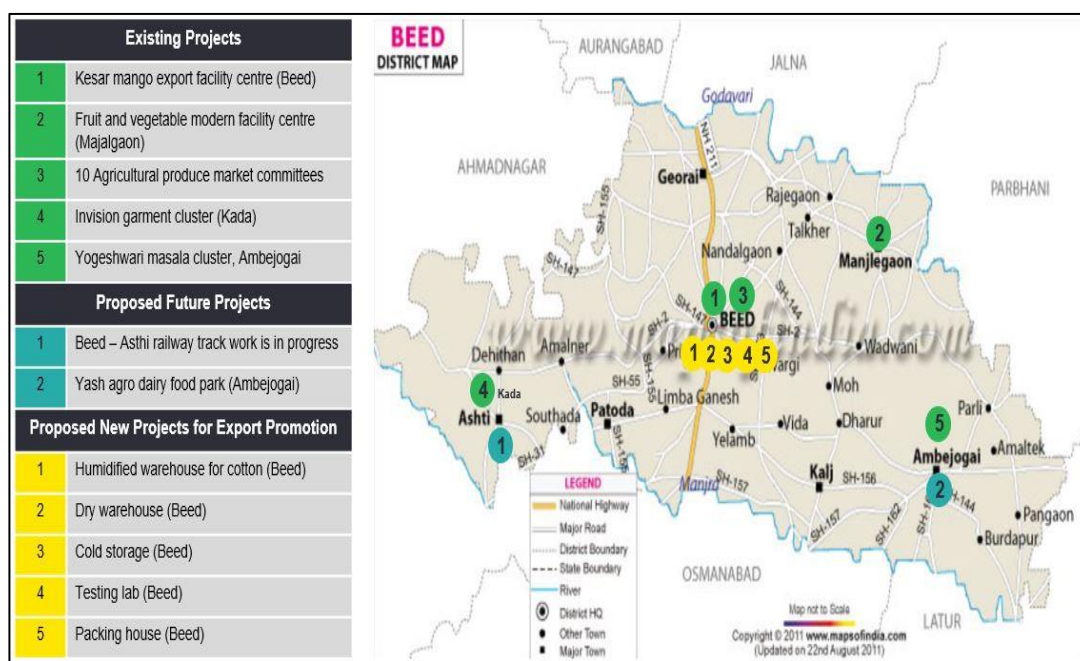
State and District Export Contribution - April 2023 to March 2024		
	Total Exports (INR crore)	Percentage Contribution
Maharashtra	5,56,400.42	15.37
Beed District	238.58	0.04

Source: Directorate General of Commercial Intelligence and Statistics (DGCI&S)



## 2.2 Existing and Proposed Infrastructure Status

The list and locations of key existing projects, proposed future projects and proposed new projects for Export Promotion in the district is as mentioned below,



## 2.3 District ODOP and GI Product Profile

The majority of the product exported from the district are Beed Custard Apple and Cotton. The exiting ODOP and GI product profile of the district is as mentioned below,

Table 2.3.1 - ODOP and GI Product Profile

Sr. No.	Product Name	GI No.	ODOP	HSN Code	Sector	Production Hub
1.	<b>Beed Custard Apple</b>	494	Yes	08109040	Agriculture	Dharur, Beed
2.	<b>Cotton and Cotton seed oil</b>	NA	Yes	52010015	Agriculture	Beed, Gevrai, Majalgaon, Parli, Kaij

Source: Directorate General of Commercial Intelligence and Statistics (DGCI&S)

\* GI - Geographical Indicator, ODOP - One District One Product

### 2.3.1 Current Market for district's ODOP and GI Products

The main exporting countries for the district are UAE, Oman, Baharain, Qatar, Kuwait, Bangladesh, China, Indonesia, Vietnam, and Taiwan. The below mentioned table illustrates current market for listed products,

**Table 2.3.2 - Current Market for district's ODOP and GI Products**

Sr. No.	Product Name	HSN Code	Major Market for Products
1.	Beed Custard Apple	08109040	UAE, Oman, Baharain, Qatar, Kuwait, Saudi Arabia, Singapore, Canada, Bangladesh, South Africa
2.	Cotton and Cotton seed oil	52010015	Bangladesh, China, Indonesia, Vietnam, Taiwan, Thailand, Oman, UAE, Tunisia, Malaysia

Source: Directorate General of Commercial Intelligence and Statistics (DGCI&S)

## 2.4 Top Exporting Products and Countries from District

The below mentioned sections illustrates details of Top 10 exporting products from district and Top 10 exporting countries from district along with its export values.

### 2.4.1 Top 10 Exporting Products from District

The below mentioned table depicts information of Top 10 exporting products of the district, product wise top exporting countries and product wise export value for **FY 2021-22 and FY 2022-23**.

**Table 2.4.1 - Top 10 Exporting Products from District (FY 2021-22)**

Sr. No.	HS Code	Product Description	Export Value (INR crore)	Top Exporting Countries
1.	17011490	Cane Sugar	303.02	Indonesia, Bangladesh, Malaysia
2.	52010015	Indian Cotton- Staple Length 28.5 mm and above	156.08	Bangladesh, China, Indonesia
3.	17019990	Refined Sugar	60.59	Somalia, Pakistan, Sri Lanka
4.	17019100	Refined Sugar containing added flavor and clearing matter	19.74	Tanzania, Rwanda, Malaysia
5.	17031000	Cane Molasses	16.62	Thailand, Egypt, Netherland
6.	52010019	Indian Cotton- Staple Length 34.5 mm and above	14.78	China
7.	52051210	Cotton Yarn	12.81	China, Bangladesh, Thailand
8.	87141090	Parts and Accessories of Motorcycle	4.41	Colombia, Guatemala, Sri Lanka,
9.	07031010	Onions (fresh or chilled)	3.92	UAE
10.	23040010	Soya Oilcake, Meal	3.26	Reunion

Source: Directorate General of Commercial Intelligence and Statistics (DGCI&S)

Beed District Export Action Plan

**Table 2.4.2 - Top 10 Exporting Products from District (FY 2022-23)**

Sr. No.	HS Code	Product Description	Export Value (INR crore)	Top Exporting Countries
1.	17011490	Cane Sugar	501.11	Bangladesh, Iraq, UAE
2.	17019990	Refined Sugar	106.02	Somalia, Djibouti, Sudan
3.	52010015	Indian cotton of staple length 28.5 mm and above	14.84	Bangladesh, Vietnam, Italy
4.	17019100	Refined Sugar containing added flavor and clearing matter	13.06	Djibouti, Somalia, Sri Lanka
5.	17011390	Other Cane Sugar	8.24	Madagascar
6.	23040010	Soya Oilcake, Meal	3.85	USA, Reunion
7.	87141090	Parts and Accessories of Motorcycle	3.24	Colombia, Guatemala, Peru
8.	52051210	Cotton Yarn	2.44	China, Turkey
9.	87149400	Brakes	0.96	Colombia, Sri Lanka, Peru
10.	23099010	Compounded Animal Feed	0.41	Tanzania

Source: Directorate General of Commercial Intelligence and Statistics (DGCI&S)

**Table 2.4.3 - Top 10 Exporting Products from District (FY 2023-24)**

Sr. No.	HS Code	Product Description	Export Value (INR crore)	Top Exporting Countries
1.	52010015	Indian Cotton of Staple Length 28.5Mm (1.4/32) & above	80.87	Bangladesh, China, Vietnam
2.	17011490	Other Cane Sugar Extract	54.12	Bangladesh, Kenya, Sri Lanka, Tanzania, Thailand
3.	52010024	Cotton, Other Than Indian, Of Staple Length Exceeding 27.0 M	53.24	Bangladesh, Vietnam, China
4.	17019990	Other Refined Sugar Including Centrifugal Sugar	33.18	Kenya, Libya, Somalia, Sri Lanka, Sudan
5.	17019100	Sugar Refined Contng Flavoring Matter	3.83	Madagascar
6.	52051210	Grey	3.40	Bangladesh, China
7.	10063090	Rice Except Parboiled (Excl Basmati Rice)	3.16	Benin, Madagascar
8.	28281010	Commercial Calcium	1.79	Djibouti



## Beed District Export Action Plan

Sr. No.	HS Code	Product Description	Export Value (INR crore)	Top Exporting Countries
		Hypochlorite (Bleaching paste)		Sri Lanka
9.	18069090	Other Food Preparations Containing Cocoa	1.33	Brazil
10.	09042110	Genus Capsicum	0.92	Indonesia, USA

Source: Directorate General of Commercial Intelligence and Statistics (DGCI&S)

### 2.4.2 Top 10 Exporting Countries from District

The below mentioned table depicts information of Top 10 exporting countries from district and export value for **FY 2021-22 and FY 2022-23**.

**Table 2.4.3 - Top 10 Exporting Countries from District (FY 2021-22)**

Sr. No.	Country	Export Value (INR crore)	Key Products Exporting to the Country
1.	Bangladesh	167.88	Indian Cotton-Staple Length 28.5 mm and above, Cane Sugar, Cotton Yarn
2.	Indonesia	124.82	Cane Sugar, Indian Cotton-Staple Length 28.5 mm and above, Refined Sugar (incl. centrifugal sugar)
3.	Malaysia	58.19	Cane Sugar, Refined Sugar (containing added flavor and clearing matter), Seeds of Anise, Coriander, Juniper Berries
4.	China	53.68	Indian Cotton-Staple Length 28.5 mm and above, Indian Cotton-Staple Length 34.5 mm and above, Cotton Yarn
5.	Iraq	36.61	Cane Sugar
6.	Vietnam	22.22	Indian Cotton-Staple Length 28.5 mm and above
7.	UAE	20.51	Cane Sugar, Refined Sugar (incl. centrifugal sugar), Onions (fresh or chilled)
8.	Somalia	17.93	Refined Sugar (incl. centrifugal sugar)
9.	Pakistan	16.67	Refined Sugar (incl. centrifugal sugar), Cane Sugar
10.	Sri Lanka	14.56	Refined Sugar (incl. centrifugal sugar)

Source: Directorate General of Commercial Intelligence and Statistics (DGCI&S)

Beed District Export Action Plan

**Table 2.4.4 - Top 10 Exporting Countries from District (FY 2022-23)**

Sr. No.	Country	Export Value (INR crore)	Key Products Exporting to the Country
1.	Bangladesh	127.76	Cane Sugar, Indian Cotton-Staple Length 28.5 mm and above
2.	Iraq	82.34	Cane Sugar
3.	UAE	73.23	Cane Sugar, Onions (fresh or chilled), Green Chilly
4.	Malaysia	69.90	Cane Sugar
5.	Djibouti	66.23	Refined Sugar (incl. centrifugal sugar), Can Sugar, Refined Sugar (containing added flavor and clearing matter)
6.	Somalia	50.34	Refined Sugar (incl. centrifugal sugar), Cane Sugar, Refined Sugar (containing added flavor and clearing matter)
7.	Iran	47.00	Cane Sugar
8.	Indonesia	28.57	Cane Sugar
9.	Kenya	18.65	Cane Sugar, Refined Sugar (incl. centrifugal sugar), Sodium Benzoate
10.	Sudan	14.96	Refined Sugar (incl. centrifugal sugar)

Source: Directorate General of Commercial Intelligence and Statistics (DGCI&S)

**Table 2.4.4 - Top 10 Exporting Countries from District (FY 2023-24)**

Sr. No.	Country	Export Value (INR crore)	Key Products Exporting to the Country
1.	Bangladesh	78.23	Indian Cotton-Staple Length 28.5 mm and above, Cane Sugar, Cotton Yarn
2.	China	66.06	Indian Cotton-Staple Length 28.5 mm and above, Grey, Powder of alloy
3.	Vietnam	19.68	Indian Cotton-Staple Length 28.5 mm and above Machinery , Cotton Yarn
4.	Somalia	15.36	Sugar Including Centrifugal Sugar
5.	Sri Lanka	15.27	Other Cane Sugar sugar Refined Contng Flavoring Or animal Feed, T-Shirts Etc. Of Cotton
6.	Sudan	13.27	Indian Cotton-Staple Length 28.5 mm and above
7.	Tanzania	12.33	Cane Sugar, Refined Sugar (incl. centrifugal sugar), Onions (fresh or chilled)
8.	Kenya	8.19	Cane Sugar, Refined Sugar
9.	Thailand	2.56	Refined Sugar (incl. centrifugal sugar), Cane Sugar

## Beed District Export Action Plan

Sr. No.	Country	Export Value (INR crore)	Key Products Exporting to the Country
10.	Benin	1.75	Rice (Excl Basmati Rice)

Source: Directorate General of Commercial Intelligence and Statistics (DGCI&S)

### 2.5 Potential Export Product Profile

As per discussion with General Manager, DIC and concern officials, considering agro based potential of the district and production of Custard Apple, Raw Cotton and Bajra, these products are considered as key export products of the district. The potential export product profile of the district is as mentioned below,

**Table 2.5.1 - Potential Export Product Profile**

Sr. No.	Product Name	Sector
1.	Raw Cotton	Agriculture
2.	Custard Apple Pulp	Agriculture
3.	Soya Doiled Cake	Agriculture
4.	Bajra	Agriculture
5.	Jaggery powder	Agriculture

### 2.6 Major Clusters in District

Below mentioned table illustrates major clusters in district,

**Table 2.6.1 - Major Clusters in District**

Sr. No.	Cluster	Location
1.	Invision Garment Cluster	Kada
2.	Vishwakarma Truck Body Building Cluster	Madalmohi
3.	Steel and Agri equipment cluster, Ambajogai engineering cluster	Adas, Kej
4.	Ashapurak Spices Cluster	Pimpalner
5.	Sarvodaya Garment Cluster	Pimpalner
6.	Yogeshwari Spices Cluster	Ambejogai
7.	Sant Goroba Pottery Cluster	Beed
8.	Sarthak Readymade Garment	Beed
9.	Khava Cluster	Gopalpur
10.	Ramling Textile Cluster	Wadwani
11.	Ambejogai Engineering Cluster Association	Ambejogai

### 2.7 Major Industrial Units in the District

The list of major industrial units in the district is as mentioned below,



Beed District Export Action Plan

**Table 2.7.1 - Major Industrial Units in District**

Sr. No.	Name of Industry	Address	Product
1.	Ambajogai Sahakari Sakhar Karkhana Ltd.	Ambajogai	Indian Alcohol
2.	Vaijinath Sahakari Sakhar karkhana Ltd.	Pangri, Tq.parli	Indian Alcohol
3.	Jai Bhavani Sahakari Sakhar Karkhana Ltd.	Gadi, Georai	Indian Alcohol
4.	Sant.Jagmitra Sah.Soot Girni Ltd.	Tokwadi, Tq.Parli	Cotton Spinning
5.	Mauli Sah.Soot Girni Ltd.	Georai	Cotton Yarn
6.	Yogeshwari Co-Op.Spining mill	Hoal, Tq.Kaij	Cotton Yarn
7.	Canpex Chemical Pvt.Ltd.	Ambora, Ashti	Nitric Acid
8.	Pawan Protein India Ltd.	Parali	Edible Oil
9.	Gajanan Extraction	Parali	Crude Oil
10.	Marathwada paper mill	Rohital, Tq.Georai	Paper bord
11.	Marathwada paper mill	Rohital, Tq.Georai	Uncoated Craft Paper
12.	The India Cement Ltd.	P.Vaijinath, Tq.Parli	Port Land Cement
13.	Girija Shankar Cotton Pvt Ltd	G.No.183, Wadgaon Dhok	Ginned cotton, cotton seeds, Bales
14.	Shree Gururaghvendra G.& P. Factory	G.No.592, Adas Rd., Dharur	Ginned cotton, cotton seeds, Bales
15.	Yoganand Ginning & P Factory	G.No.221, Beed	Ginned cotton, cotton seeds, Bales
16.	Pradeep Fibers Pvt.Ltd	G.No.241, Chikhli	Ginned cotton, cotton seeds, Bales
17.	Gajanan Extraction Ltd	G.No.309, Kauthali	Doiled cake, Solvent Extraction, Expeller oil
18.	Rutuja Industries	S.No.124, Bahirwadi	Cotton ginning, oil extraction
19.	Gajanan Oil Industries	G.No.652, Wadwani	Cotton Ginning, cotton seed Oil
20.	S.R.Cotton	G.No.131, Ghosapuri	Ginned cotton, cotton seeds, Bales
21.	Parvin Cotex Pvt.Ltd.	S.No.222, Georai	Ginned cotton, cotton seeds, Bales
22.	Cotseed Udyog	G.No.847, Dhangarwadi	Ginned cotton, cotton seeds, Bales
23.	Mauli Ginnig & P Factory	G.No.236, Kaij	Ginned cotton, cotton seeds, Bales
24.	Amit Industries	G.No.226, Tokewadi	Packaged drinking water

Beed District Export Action Plan

Sr. No.	Name of Industry	Address	Product
25.	Keshav Ginning & Pressing Factory	G.No.235, Pisegaon	Ginned cotton, cotton seeds, Bales
26.	Jamola Fibers	G.No.256, Nathapur	Ginned cotton, cotton seeds, Bales
27.	Rishabh Cotton Industries	G.No.47, Bagpimpalgaon	Ginned cotton, cotton seeds, Bales
28.	Mauli Ginnig & P Factory	G.No.179, Bahegaon	Ginned cotton, cotton seeds, Bales
29.	Sagar Ginning & Oil Indus.	S.No.240, Govindwadi	Cotton Ginning, cotton seed Oil
30.	Moreshwar Ginning Pressing Factory	G.No.45, Phulepimpalgaon	Cotton lint, cotton seeds
31.	Parvati Cotton Industries	G.No.199, Ghosapuri	Ginned cotton, cotton seeds, Bales
32.	Shambaba Cotton Industries	G.No.45, Bahirwadi	Ginned cotton, cotton seeds, Bales
33.	Somani Ginnig Factory	G.No.337, Padalsingi	Ginned cotton, cotton seeds, Bales
34.	Anurag Were Housing & Agro Processing	S.No.221, Georai	Ginned cotton, cotton seeds, Bales
35.	Yoganand Ginning & P Factory	G.No.221, Govindwadi	Ginned cotton, cotton seeds, Bales
36.	N.K.Fibers	G.No.198, Ghosapuri	Ginned cotton, cotton seeds, Bales
37.	Saibaba Cotton & Oil Indu.	G.No.651, Wadwani	Ginned cotton, cotton seeds, Bales
38.	Mauli Ginnig & P Factory	G.No.179, Bahegaon	Ginned cotton, cotton seeds, Bales
39.	Vipra Industrieis	G.No.106, Ghosapuri	Mfg. of cotton Bandages
40.	Pornima Cotton Ginning & Pressing Factory	G.No.101, Kavadgaon	Cotton lint, cotton seeds
41.	Nilesh Cotton Industries	G.No.118, Rohital Rd., Georai	Cotton lint, cotton seeds
42.	Natraj Prestress	G.No.348, Mauj	PSC poles, Allied cement
43.	Somani Ginnig Factory	G.No.327, Padalsingi, tq. Georai	Ginned cotton, cotton seeds, Bales
44.	N.K.Fibers	G.No.198, Ghosapuri, tq.Beed	Ginned cotton, cotton seeds, Bales
45.	Prasad Cotton Indus.	G.No.268, Georai, tq. Georai	Ginned cotton, cotton seeds, Bales
46.	Raka Cotton Indus.	G.No.27, Bahirwadi, tq.Beed	Ginned cotton, cotton seeds, Bales
47.	Mahabali Cotton Indus.	G.No.219, Georai, tq.Georai	Ginned cotton, cotton seeds, Bales

Beed District Export Action Plan

Sr. No.	Name of Industry	Address	Product
48.	Vighnaharta Ginning Factory	G.No.74, Sawleshwar, tq.Georai	Ginned cotton, cotton seeds, Bales
49.	Gajanan Extraction Ltd	G.No.309, Kauthali, tq. Parli	Doiled cake, Solvent Extraction, Expeller oil
50.	Shankar Parvati G. & P Fact.	G.No.85, Rajuri, tq.Beed	Ginned cotton, cotton seeds, Bales
51.	Mancot Pvt Ltd.	G.No.51, Phulepimpalgaon, tq.Majalgaon	Ginned cotton, cotton seeds, Bales
52.	Gajanan Extraction Ltd.	G.No.309, Kauthali, tq. Parli	Doiled cake, Solvent Extraction, Expeller oil
53.	Puneet Cotton Pvt.Ltd.	G.No.112, Sonwadi, tq. Georai	Ginned cotton, cotton seeds, Bales
54.	Vardhman Cottex	G.No.82, Chobha Nimgaon, tq.Ashti	Ginned cotton, cotton seeds, Bales
55.	Balaji Agro Indus.	G.No.598, Dharur, tq. Dharur	Ginned cotton, cotton seeds, Bales
56.	Shree Nagadnarayan Cotton Indus.	G.No.723, Sakshalpimpri, tq.Beed	Ginned cotton, cotton seeds, Bales
57.	S.R.Cotton	G.No.131, Ghosapuri, tq.Beed	Ginned cotton, cotton seeds, Bales
58.	Yeshodeep Cotton Indus.	G.No.169,Manjarsumba tq.Beed	Ginned cotton, cotton seeds, Bales
59.	Bahubali Cotton Indus.	G.No.543, Georai, tq. Georai	Ginned cotton, cotton seeds, Bales
60.	Venkatesh Cotton Indus.	G.No.139, Kumbhephale, tq.Kaij	Ginned cotton, cotton seeds, Bales
61.	Laxmivenkatesh G. & P.Fact.	G.No.409, Bhopa, tq. Dharur	Ginned cotton, cotton seeds, Bales
62.	Shree Kalka Fibers Pvt.Ltd.	G.No.164, Bagpimpalgaon, tq.Georai	Ginned cotton, cotton seeds, Bales
63.	N.K.Agro Coal Indus.	G.No.162, Kharatadgaon, tq.Majalgaon	White coal briquettes
64.	Madhav Cotton Pvt.Ltd.	G.No.115, Georai, tq.Georai	Ginned cotton, cotton seeds, Bales
65.	Jay Shri Ganesh G & P Fact.	G.No.16, Namalgaon, tq.Beed	Ginned cotton, cotton seeds, Bales
66.	Gurukrupa Fibers Llp	G.No.132, Ghatsawali, tq.Beed	Ginned cotton, cotton seeds, Bales
67.	Radhakrishna Cotton Indus	G.No.61, Dhangarwadi, tq.Majalgaon	Ginned cotton, cotton seeds, Bales
68.	Mauli Cotex	G.No.241,Georai, tq. Georai	Ginned cotton, cotton seeds, Bales
69.	Balaji G. & P Indus.	G.No.55, Bahirwadi, tq.Beed	Ginned cotton, cotton seeds, Bales



Beed District Export Action Plan

Sr. No.	Name of Industry	Address	Product
70.	Kalptaru G & P Indus.	G.No.55, Bahirwadi, tq.Beed	Ginned cotton, cotton seeds, Bales
71.	Eklingshwar G & Pressing	G.No.358, Padalsingi, tq. Georai	Ginned cotton, cotton seeds, Bales
72.	R.N.Fly Ash Bricks	G.No.799, Dagadwadi, tq. Ambajogai	Fly ash bricks
73.	Mahalaxmi Cotton Company	G. No. 114/12, Nandgaon tq. Ambajogai	Ginned cotton, cotton seeds, Bales
74.	N C C C J Cotton Pvt. Ltd	G. No. 171, Kuppa Wadwani	Ginned cotton, cotton seeds, Bales
75.	N. K. Oil Industries	G. No. 109, Ghosapuri, Beed	Cotton seeds oil
76.	Girijashankar Cotton Pvt. Ltd	Gut no. 183 , 195, Wadgaon Dhok, tq. Gevrai	Cotton Bales & cotton seeds
77.	D.B. Oil & Cake Industries Lp	Plot No. 46, MIDC, Beed	Cotton seeds, Oil & Oil Cake
78.	Tuljabhavani Ginning & Pressing Industries Lp	Gut. No. 13, Bahirwadi, Tq. Beed	Cotton Bales & cotton seeds
79.	Rajeshri Chatrapati Ginning	Gut no. 118, Rohitl road, Georai	Cotton Bales & cotton seeds
80.	Vaishnavi Enterprises	Gut No. 616, Tandalwadi road, Tq. Dharur	Cotton Bales & cotton seeds
81.	Jamola Fibers	G. no. 256, Nathapur, Beed	Cotton Bales & cotton seeds
82.	Manjit Cotton Pvt. Ltd.	G. no. 175, Bagi Pimpalgaon, Tq. Gevrai	Cotton Bales & cotton seeds
83.	Yoganand Ginning & Pressing Factory	Gut no. 221, Govindwadi, Tq. Gevrai	Cotton seeds, Oil & Oil Cake
84.	Jamola Fibers	G. no. 256, Nathapur, Beed	Cotton Bales & cotton seeds
85.	Shivkiran Krushi Udhoyg	Gat No. 145, at post Sangam, Tq. Dharur	Raw cotton
86.	Govind Oil Industries	Gut No. 119, Plot no. 22, Ghosapuri, Beed	Cotton seeds, Oil & Oil Cake
87.	Osiya Oil Cake Industries Lp	Gut No. 80, Kumshi Road, Beed	Cotton seeds, Oil & Oil Cake
88.	Shriniwas Steel Tube Mfg.	G. no. 52 A, Jirewadi, Jalna rd., Beed	Steel pipes
89.	Sankalp Ginning Industries	sr. no. 315, Mochi Pimpalgaon, Beed	Cotton seeds, Oil & Oil Cake
90.	Pawansoot Agro Ind.	Plot no. B-15, MIDC Beed	Cotton seeds, Oil & Oil Cake
91.	P. S. Cotton Oil Cake Ind.	Namalgaon, Tq. Gevrai	Cotton seeds, Oil & Oil Cake

Beed District Export Action Plan

Sr. No.	Name of Industry	Address	Product
92.	Madhur Industries	Sr. No. 243- B, Govindwadi, Tq. Gevrai	White coal briquettes
93.	Shri Hira Industries	Plot no. 15, MIDC Beed	Cotton seeds, Oil & Oil Cake
94.	Shri Sai Agro Industries	S.no. 45, Mursadpur, Tq. Ashti	Cotton seeds, Oil & Oil Cake
95.	Shreya Energy	Sr. No. 3 & 9, Manayarwadi, Tq. Georai	White coal briquettes
96.	Shetkari Cotton Industries	Gut No. 23, Padalsingi, Tq. Georai	Edible & Nonedible Oil &Cakes
97.	Shri Ganesh Krushi Udyog	Gut no. 14/1, Manjarsubha, Tq. Beed	Cotton seeds, Oil & Oil Cake
98.	Moreshwar Ginning Pressing Factory	G no. 45, Phule Pimpalgaon, Tq. Majalgaon	Cotton seeds, Cotton Lint
99.	Rama Printing Ind.	g. no. 192, Tokatwadi, Tq. Parli	Multicolor printing & material
100.	Satayam Agro Industries	G no. 22, Gevrai	Cotton seeds, Cotton Lint
101.	Randad Pipes	Plot no. 108, Yogeshwari co-op. Ind. Est., Jograiwadi, Tq. Ambajogai	All types of PVC pipes
102.	Anvi Enterprises	Plot no. 107, Yogeshwari co-op. Ind. Est., Jograiwadi, Tq. Ambajogai	Plastic granules
103.	Ratnam Ropes Pvt. Ltd.	plot no. 25/26/31&32, Co- op Ind. Estate, Ambajogai	All types of Nylon
104.	Tirupati Polishing & Cleaning	Sr. no. 52 , 55, Bhariwadi, Beed	Edible & Nonedible Oil &Cakes
105.	Balaji Bio Fuel	G no. 89, Ghosapuri, Beed	White coal briquettes
106.	Geeta Industries	sr. no. 421, Parli	Steel fabrication & furniture
107.	Maharashtra Cottons	g. no. 346, Patrud, Tq. Majalgaon	Cotton seeds, Cotton Lint
108.	S M A Jute Bags Inds.	Plot no. 10 & 10/1 MIDC Beed	Cotton seeds, Oil & Oil Cake
109.	Shrinivas Bio Fuels	G. no. 264, Ahmadpur rd, Ambajogai	White coal briquettes
110.	Sai Nirman Bio Coal	G. no. 61 Ghosapuri Beed	White coal briquettes
111.	Krushna Oil Ind	Sr. no. 264, Hoal, Tq. Kaij	Cotton seeds, Oil & Oil Cake
112.	Shree Samarth Oil Refinary Llp	Gut No. 9, Ghatsavali, Beed	Cotton seeds, Oil & Oil Cake
113.	Trimurti Polyplast Ind. Pvt. Ltd.	g. no. 731, pargaon, Tq. Ashti	Plastic granules

## Beed District Export Action Plan

Sr. No.	Name of Industry	Address	Product
114.	Shree Datta Plastic Ind.	Plot no. 54, 69, 70, MIDC, Beed	Plastic granules
115.	Mahesh Agro Processing	Plot no. 29, Market Yard, Beed	Cotton seeds, Oil & Oil Cake
116.	Laxmi Venkatesk Ginning & Pressing Factory	Gut. No. 409 kopa, tq. Dharur	Cotton seeds, Oil & Oil Cake
117.	M/S. Ambadas Ginning & Pressing Pvt. Ltd.	G. no. 43/A, Majalgaon	Cotton seeds, Oil & Oil Cake
118.	Guru Raghvendra Ginning & Pressing Factory	G.No. 502, Dharur	Cotton seeds, Oil & Oil Cake
119.	D.B. Oil & Cake Industries Lp	Plot No. 46, MIDC Beed	Cotton Bales & cotton seeds
120.	Nipun Biomass Briquets	gut no. 54,55, Malegaon, Tq. Kaij	White coal briquettes
121.	Manjit Cotton Pvt. Ltd.	Kavadgaon, Tq. Parli	Cotton Bales & cotton seeds
122.	Narmada Agro Cottex Pvt.Ltd	Gut.No. 120, Bhopa, Tq. Dhrur	Cotton Bales & cotton seeds
123.	Hira Oil Mill	S. No.420/21, Parli	Oil mill
124.	Narmada Devi Cotspin LLP	A/P Maindha, Beed	Cotton Bales & cotton seeds
125.	Shri Satya Industries	Gut No. 50/1, Bahirwadi	Cotton Bales & cotton seeds
126.	Sanket Steel Industries	Gut No. 38/A, Sangaon	Steel works
127.	Narmada Fibres LLP	S.No.203, A/P Dharur	Cotton Bales & cotton seeds
128.	Guru Ganesh Padma	Kumshi, Beed	Cotton Bales & cotton seeds
129.	Akshara PVC Pipes	Sr. No. 65, At Post Pathara	Plastic granules
130.	Uttam Bio Fuels	Sr.No.133/A, Wasanwadi, Beed	White coal briquettes
131.	M.B. Agro	Gut No. 45, At Post Lokhandi Savrgaon	Dal mill
132.	S.K. Cotton	Gut No. 155, Village, Dharmapuri	Cotton Bales & cotton seeds

### 2.8 Key Issues in Export

Below mentioned table illustrates category wise key issues observed in export of the district,

Beed District Export Action Plan

**Table 2.8.1 - Key Issues in Export**

<b>Category</b>	<b>Issues</b>	<b>Relevant Government Authority</b>
<b>Regulatory</b>	To resolve export queries related to all concern departments (DIC, Agriculture, GST, Financial institution, Export agencies, etc.), coordination of all concern departments should be done through the Single Window System and the Helpdesk should be made available for it.	Central and State Government Authorities
	Local custom clearance of Export goods.	
	Availability of ODOP facilitation center at district level.	State Government and District Authorities
<b>Institutional Support</b>	Training program should be conducted to know the latest updates in foreign trade policies.	Central and State Government Authorities
	Export awareness seminars/ workshops/ trainings should be organized for businessmen /farmers/ industrialists.	Central, State Government and District Authorities
	Interactions with ICD's and industries/ entrepreneurs	District Authorities
	Institutions of relevant export promotion education /training course.	
	Curriculum preparation for Export Promotion.	
	Study tours should be organized in various countries to know the latest technical advancements in developed countries.	State Government Authorities
	Information of organic and residue free farming and related schemes should be made available.	EPC and State Government Authorities
<b>Promotion and Awareness</b>	Permanent Exhibition Centre at district should be established.	Central and State Government Authorities
	Organizing trade fairs, Buyer-Seller meets.	
	Promotion of Export promotion online portal, Information dissemination through Export Guidebook, ODOP booklet	District Authorities
	To resolve export related and other issues of importance, interaction with the central agencies (DGFT, Customs and others) and state government offices should be carried out.	
	Interactions with EPC's and entrepreneurs.	
	Farmer producing company formation	
	Organizing seminars, exhibitions/Haat, Buyer seller meet	
	Export awareness/sensitization for budding entrepreneurs and newly developed units	

Beed District Export Action Plan

Category	Issues	Relevant Government Authority
	Considering agro base of the district, special efforts shall be taken for export of agrobased products.	Central, State Government and District Authorities
	Additional Subsidies should be given by government for participation in international trade fairs, Buyer-Seller meets.	Central and State Government Authorities
	Assistance of Central Government schemes.	Central Government Authorities
	ODOP cluster development.	District Authorities
	Annual calendar for events like Buyer-Seller Meet, Trade Exhibition, Capacity building training, etc.	
	Designing, Branding, marketing, and technical expertise for ODOP.	
	ODOP promotion at Railway Station.	
	ODOP Gift Hamper.	
Use of Social Media Platform for ODOP promotion.		
<b>Industrial Infra</b>	A substantial volume of district's export is carried out through indirect channels of export like CHA or export houses.	Central, State Government and District authorities
	Assistance in GI enrolment.	District Authorities
	Warehouse and Cold storage facility.	
	To maintain export quality of products, testing facilities, Material Testing, UV testing, certification labs and calibration facilities, etc. are mandatory requirements for exports and should be made available.	State Government Authorities
	Requirement of Design Centre/Common facility Centre.	
W.r.t. electricity, current per unit rate of electricity is high compared to other states. Considering it, per unit rate should be reduced.		
<b>Logistic Infra</b>	Railway line at Beed.	Central Government Authorities
	Adequate transportation facilities should be made available.	Central and State Government Authorities
<b>Finance</b>	To boost export of the district, credit facilities with extremely competitive rates of interest should be given to exporters.	Central Government Authorities
	Provision of special incentives/ subsidies for the Marathwada Region.	
	For Import-Export business transactions through banks, special permission needs to be availed from RBI.	
	A foreign exchange facility should be available in the district.	



Beed District Export Action Plan

Category	Issues	Relevant Government Authority
	To promote the export of agro-based products, sector specific reductions/exemption in taxes should be given.	
	As a standard export process (direct/indirect) transport, logistics, and cargo expenses have to be paid in advance which is very high compared to the cost of production. Considering freight is an important factor in the price of the export product, the government should provide an exemption/ reduction on the freight for the exporters.	Central and State Government Authorities
<b>Agriculture Sector</b>	Information on organic and residue-free farming and related schemes should be made available.	State Government Authorities
	The maximum export carried out in the district is not being exported by the farmers directly but through the custom houses/ traders. In this process ultimately all the available government benefits (commercial, etc.) go to custom houses/ traders whereas the farmer producing the export quality product does not get the benefit.	Central and State Government and District Authorities
	Reserve quota for Beed district in Jalna Dry Port Railway container zone.	
	The unavailability of the railway station in Beed city is the key concern.	
	Lack of dissemination of knowledge on the development of new varieties, and value-added products as per the requirement of the buyers' market is a major challenge.	
Lack of specialized knowledge considering agriculture product export business.		

## 2.9 Export Promotion Initiatives by District

### 2.9.1 Formation of DEPC (District Export Promotion Council)

The Government of Maharashtra has notified the District Export Promotion Councils (DEPC) in the state. The District Export Promotion Council (DEPC) constituted under the Chairmanship of District Collector. The Task Force Committee constituted under the Chairmanship of General Manager, District Industries Centre (DIC).

The broad role of District Export Promotion Council (DEPC) is as mentioned below,

- ▶ Preparation of District Export Action Plan for 5 years
- ▶ Co-ordination with DGFT, EPCs and Associations for export promotion
- ▶ Promotion of GI, ODOP and Handicraft, Agri and Horticulture products
- ▶ Identify diversification opportunities for exports
- ▶ Preparation of export database with help of DGFT
- ▶ Hold meetings of District Export Promotion Council (DEPC), Trade fairs and B2B meetings
- ▶ Ensure availability of infrastructure at district level such as warehousing, cold storage, marketing, R&D and testing laboratories etc.
- ▶ Availability of export credit for exporters
- ▶ Grievance redressal mechanism at district level

The details of DEPC meetings and outreach program of district are as mentioned below,

**Table 2.9.1 - DPEC Meetings and Outreach Program**

Sr. No.	Date	DEPC meetings/ Outreach Program Details
1.	29.12.2020	DEPC Meeting – Formation of DEPC
2.	09.09.2021	District Export Action Plan discussion and approval.
3.	24.09.2021	Exporter's Conclave – The event was organized to showcase export potential of the district and panel discussions for issues faced by exporters and strategies to improve export scenario of the district.
4.	19.09.2022	Export Conclave – The event was organized for Investment Promotion, Ease of Doing Business (EODB), Export and One District One Product (ODOP). More than 100 participants attended the workshop.
5.	11.01.2023	DEPC Meeting – Discussion on Export initiatives and Export scenario of the district.
6.	17.03.2023	DEPC Meeting – Discussion on Export initiatives and Export scenario of the district.
7.	03.05.2023	DEPC Meeting- Discussion on Export initiatives and Export scenario of the district and requirement of transportation facilities and Institutional mapping for district export potential products.
8.	12.09.2023	Discussion on Awareness on Export Promotion to stakeholders.
9.	24.10.2023	IGNITE Maharashtra event
10.	09.02.2024	Discussion topic- Diversification of Product, how to increase export

Beed District Export Action Plan

11.	10.3.2024	District Investors summit Programme to attract investments
12.	27.3.2024	IGNITE Maharashtra Programme

## 2.10 Diversification Opportunities for ODOP and GI products

The key diversification markets for the export of the district are Norway, Maldives, UK, Hong Kong, Morocco, Italy, Portugal, and Mauritius. The below mentioned table illustrates diversification opportunities for ODOP and GI products of district,

**Table 2.10.1 - Diversification Opportunities**

Sr. No.	Product Name	HSN	Sector	Diversification Opportunities
1.	Beed Custard Apple	08109040	Agriculture	Norway, Maldives, UK, Hong Kong, USA, Malaysia, Aruba, China, European Union, Japan
2.	Cotton and Cotton seed Oil	52010015	Agriculture	Morocco, Italy, Portugal, Mauritius, Angola, Turkey, Japan, Iran, Ethiopia, Baharain

Source: Directorate General of Commercial Intelligence and Statistics (DGCI&S)

## 2.11 Export Promotion Strategy

Below mentioned table illustrates district requirements, strategy categorization and recommended strategies,

### Strategy Category Types:

- ▶ **Short Term (0 to 2 yrs.)**
- ▶ **Medium Term (3 to 5 yrs.)**
- ▶ **Long Term (5 to 10 yrs.)**

**Table 2.11.1 - Export Promotion Strategy**

Category	Strategy Time Frame	District Requirement	Export Promotion Strategy	Relevant Govt. Authority
<b>Regulatory</b>	Short Term	To resolve export queries related to all concern departments (DIC, Agriculture, GST, Financial institution, Export agencies, etc.), coordination of all concern departments should be done through the Single Window System and the Helpdesk should be made available for it.	Setting up DIC as District Export Hub can resolve the issue. DIC working as District Export Hub should set up a centralized helpdesk incorporating all concern departments for the appropriate and timely solution of the queries.	Central and State Government and District Authorities
		Local custom clearance of Export goods.		

Beed District Export Action Plan

Category	Strategy Time Frame	District Requirement	Export Promotion Strategy	Relevant Govt. Authority
		Availability of ODOP facilitation center	ODOP facilitation center should be made available	State Government and District Authorities
<b>Institutional Support</b>	Short Term	The training program should be conducted to know the latest updates in foreign trade policies.	Central and State Government concern agencies should organize training for the latest update in foreign trade policy and encourage and promote the direct export of agro products by farmers.	Central and State Government Authorities
	Short Term	Export awareness seminars/ workshops /training should be organized for businessmen/ farmers/ industrialists.	Central and State Government concern agencies should organize export awareness programs.	District Authorities
		Interactions with ICDs and industries/ entrepreneurs.	Coordinate and promote exports in coordination with ICDs and industries/ entrepreneurs.	
		Institutions of relevant export promotion education/training courses.	Identification of Institutions relevant for export promotion.	
		Curriculum preparation for Export Promotion.	Preparation of curriculum for short-term and long-term export-oriented courses in coordination with identified institutes.	
		Study tours should be organized in various countries to know the latest technical advancements in developed countries.	Central and State Government concern agencies should organize study tours and special incentives should be given to visitors.	



Beed District Export Action Plan

Category	Strategy Time Frame	District Requirement	Export Promotion Strategy	Relevant Govt. Authority
		Information on organic and residue- free farming and related schemes should be made available.	EPCs should organize sector specific knowledge sharing sessions.	EPC and State Government Authorities
<b>Promotion and Awareness</b>	Short Term	A permanent Exhibition Centre in the district should be established.	Setting up DIC as District Export Hub and working as an integrated, centralize helpdesk and establish a permanent exhibition center.	Central and State Government and District Authorities
		Organizing trade fairs, Buyer-Seller meets.		
		Considering agro base of the district, special efforts shall be taken for export of agro base products	The State Government and District Authorities should encourage farmers to export. The facilities like export infrastructure, transportation, and cold storage should be made available.	Central, State Government and District Authorities
		Promotion of Export promotion online portal, Information dissemination through Export Guidebook, ODOP booklet	Promotion of online portal at the district level – Interactions with Industry associations.	District Authorities
			Information dissemination through Export guidebook and ODOP booklet.	
Publicity through news and social media about the export potential of the district.				
To resolve export related and other issues of importance, interaction with the central agencies (DGFT, Customs, and others) and state government offices should be carried out.	Coordination with central agencies (DGFT, Customs and others) and state government offices.			

Beed District Export Action Plan

Category	Strategy Time Frame	District Requirement	Export Promotion Strategy	Relevant Govt. Authority
		Interactions with EPCs and entrepreneurs.	Coordinating interactions/ seminars with EPCs and entrepreneurs.	
		Farmer-producing company formation	Organizing farmers producing companies for agro-processing units.	
		ODOP cluster development.	Promotion of ODOP cluster development.	
		Annual calendar for events like Buyer-Seller Meet, Trade Exhibition, Capacity building training, etc.	Maintaining Annual calendar for events like Buyer- Seller Meet, Trade Exhibition, Capacity building training, etc.	
		Designing, Branding, marketing, and technical expertise for ODOP.	Identification of institutes for designing, Branding, marketing, and technical expertise of ODOP.	
		ODOP promotion at Railway Station	ODOP promotion at Railway Station Through banner/ stall display at the main platform	
		ODOP Gift Hamper.	Create ODOP Gift Hamper.	
		Use of social media Platform for ODOP promotion.	Use of social media Platform like Whatsapp, Facebook, for ODOP promotion.	
	Medium Term	Organizing seminars, exhibitions/Haat, Buyer seller meet	Organizing Seminars and exhibitions/Haat for entrepreneurs - This activity would be an ongoing activity.	

Beed District Export Action Plan

Category	Strategy Time Frame	District Requirement	Export Promotion Strategy	Relevant Govt. Authority
			Organizing Buyer seller meetings for entrepreneurs - This activity would be an ongoing activity.	
	Long Term	Export awareness/ sensitization for budding entrepreneurs and newly developed units	Sensitization by organizing seminars and exhibitions for budding entrepreneurs and newly developed units in due course of time - This activity would be an ongoing activity.	
<b>Industrial Infra</b>	Short Term	A substantial volume of the district's export is carried out through indirect channels of export like CHA or export houses.	Central, State Government, and District concern authorities should plan long-term policies to resolve this issue as it is directly impacting the economy and exports of the district as well as adversely impacting the producers/ farmers/businessmen /Exporters.	Central, State Government and District Authorities
		Assistance in GI enrolment.	Assistance in GI enrolment.	District authorities
		Warehouse and Cold storage facility.	Considering growing exports of agro-based and food processed/ perishable products in the district, the authorities should plan to have more cold storage facilities in the district.	
		To maintain the export quality of products, testing facilities, Material Testing, UV testing, certification labs, calibration facilities, etc. are mandatory	To maintain the export quality of the products below mentioned facilities and measures are of prime importance and should be made available,	State Government Authorities

Beed District Export Action Plan

Category	Strategy Time Frame	District Requirement	Export Promotion Strategy	Relevant Govt. Authority
		requirements for exports and should be made available.	<ul style="list-style-type: none"> <li>▶ Testing Facilities</li> <li>▶ U.V. Testing</li> <li>▶ Packaging</li> <li>▶ Certification</li> </ul> <p>Also, sector-specific R&amp;D facilities should be made available to boost export of the district,</p>	
	Short Term	Requirement of Design Centre/Common facility Centre.	Considering the growing potential of export in the district, this activity should be expedited.	State Government Authorities
	Medium Term	W.r.t. electricity, current per unit rate of electricity is high compared to other states. Considering it, the per unit rate should be reduced.	The concerned State government agency should review the current per unit rate of electricity as it is high compared to other states. The reduction in per unit rate will help in reduction in production cost.	
<b>Logistic Infra</b>	Short Term	The Railway line at Beed.	Beed city is the center of business activities in the district. Considering it, railway stations should be made available in Beed city.	Central and State Government Authorities
			The availability of optimum railway transportation facilities in the district will help to boost exports of the district.	
	Medium Term	Adequate transportation facilities should be made available.	Road transportation facilities should be improved (conversion of existing highways into multi-laning, quality of roads, etc.). The Jalna dry port connectivity should be taken into	

Beed District Export Action Plan

Category	Strategy Time Frame	District Requirement	Export Promotion Strategy	Relevant Govt. Authority
			consideration in this regard.	
<b>Finance</b>	Short Term	To boost export of the district, credit facilities with extremely competitive rates of interest should be given to exporters.	To compete with the global export market, exporters need credit facilities with extremely competitive rates of interest.	Central and State Government Authorities
		Provision of special incentives/ subsidies for the Marathwada Region	For the Marathwada region, provision of special incentives from the Government in logistics for agriculture and food processing products.	
			Provision of subsidy for transportation/ freight cost to help in exporting directly.	
			Special subsidies for small exporters.	
		For Import-Export business transactions through banks, special permission needs to be availed from RBI.	To ease export activities and boost the export of the district, every district should have this facility available. The concerned authorities should evaluate the feasibility of the same.	
	A foreign exchange facility should be available in the district.			
Short Term	As a standard export process(direct/indirect) transport, logistics, and cargo expenses have to be paid in advance which is very high compared to the cost of production. Considering freight is an important factor in the price of the export product, the government should provide exemption/	Subsidizing the transportation/freight Cost could help producers/ farmers / businessmen export directly as this is the biggest impediment to them.		



Beed District Export Action Plan

Category	Strategy Time Frame	District Requirement	Export Promotion Strategy	Relevant Govt. Authority
		reduction on the freight for the exporters.		
	Medium Term	To promote the export on agro base products, sector specific reductions/ exemption in taxes should be given.	Considering agro-processed export in the district it is required.	
<b>Agriculture Sector</b>	Short Term	Information on organic and residue-free farming and related schemes should be made available.	The EPC and Government Authorities should plan knowledge sessions to provide information on organic farming and schemes available for it.	State Government Authorities
		The maximum export carried out in the district is not being exported by the farmers directly but by the custom houses/ traders. In this process ultimately all the available government benefits (commercial, etc.) go to custom houses/ traders whereas the farmer producing the export quality product does not get the benefit.	A clearing agent should be available in the Beed district. Certificate of Origin Issuing authority should be available in the district.	Central, State Government and District Authorities
		Reserve quota for Beed district in Jalna Dry Port Railway container zone.	Considering the district's export potential of agriculture products and to speed up the shipment delivery, the quota for the Beed district should be allocated in the Jalna Dry Port railway container zone.	
		Lack of dissemination of knowledge on the development of new varieties, and value-added products as per requirement of the		

Beed District Export Action Plan

Category	Strategy Time Frame	District Requirement	Export Promotion Strategy	Relevant Govt. Authority
		buyers' market is a major challenge.		
		Lack of knowledge of Agriculture export-based information dissemination	Information dissemination is the main impediment and needs to be regular and comprehensive. It should cover all areas like technological advancement in seeds, varieties, various State and Central Government Supports, Agri Import-Export Fact, Import-Export Rules, documentary compliances, Quality Certifications, Cargo Facilities, Schedule, Rent/Freight, logistics, etc. in the local language Marathi and international language English.	Central, State Government and District Authorities
			To achieve the above, a fully functional facilitation center in the district is essential. It could provide market intelligence like pricing, demands, contacts of purchasers, logistics and other costs, etc.	
		Lack of specialized knowledge considering agriculture product export business.	The agriculture exporter business requires specialized knowledge of the process since the product has to undergo from seeding to harvest, branding, packing, storage, cooling chain, transport,	

Beed District Export Action Plan

Category	Strategy Time Frame	District Requirement	Export Promotion Strategy	Relevant Govt. Authority
			<p>logistics, etc.; such specialized knowledge is lacking on the part of the farmer. Also, the market intelligence knowledge for export product pricing, requirements of the export market, demand, etc. is lacking among the farmers. To enhance it training sessions should be arranged by Central, State Government, and District Authorities which will in turn boost export of the district.</p>	

## 2.12 Key Department Contacts

- ▶ **Export Commissioner cum Development Commissioner (Directorate of Industries),**  
**Address:** New Administrative Building, Madam Cama Road, Opp. Mantralaya, Mumbai-400032.  
**Email:** [didci@maharashtra.gov.in](mailto:didci@maharashtra.gov.in)  
**Phone:** (022)-22028616
  
- ▶ **Joint Director of Industries, Chh.Sambhajinagar region**  
**Address:** Vikas Bhavan, 2<sup>nd</sup> Floor, Adalat Road, Chh.Sambhajinagar-431001.  
**Email:** [diroChh.Sambhajinagar@maharashtra.gov.in](mailto:diroChh.Sambhajinagar@maharashtra.gov.in)  
**Phone:** (0240)-2331105
  
- ▶ **General Manager, District Industries Centre, Beed**  
**Address:** Basirganj, Dist.Beed-431122.  
**Email:** [didic.beed@maharashtra.gov.in](mailto:didic.beed@maharashtra.gov.in)  
**Phone:** (02442)-222285/ 222875
  
- ▶ **Industry Association Contact List**

**Table 2.12.1 - Industry Association Contact List**

Sr. No.	Name of Association	Contact Person	Contact Number
1.	Beed District Ginning & Pressing Union Association, Beed	Mr. Gopal Kasat	98601-92116
2.	Bahujan Udyog Vyapari Sanghtana, Beed	Mr. Santosh Upare	94039-39393
3.	Beed Jilha Tarun Udyojak Sanghtana	Mr. Jawaharlal Sarda	80875-03655
4.	Laghu Udyog Bharati, Beed	Mr. Prakash Raka	93250-02751
5.	Vaidyanath Co. Op. Industrial Estate, Parli	Mr. Lokare	94222-40911
6.	Yogeshwari Co. Op. Industrial Estate, Ambejogai	Mr. Kamlakar Chausalkar	94222-40779
7.	Kada Gramodyog Industrial Estate, Kada	Mr. Arun Deokar	94215-88697



